

GPR3 Antibody (Extracellular Domain)
Rabbit Polyclonal Antibody
Catalog # ALS10037**Specification**

GPR3 Antibody (Extracellular Domain) - Product Information

Application	IHC-P
Primary Accession	P46089
Reactivity	Human, Mouse, Hamster, Monkey
Host	Rabbit
Clonality	Polyclonal
Calculated MW	35kDa KDa
Dilution	IHC-P~~N/A

GPR3 Antibody (Extracellular Domain) - Additional Information**Gene ID** 2827**Other Names**

G-protein coupled receptor 3, ACCA orphan receptor, GPR3, ACCA

Target/Specificity

Human GPR3. BLAST analysis of the peptide immunogen showed no homology with other human proteins.

Reconstitution & Storage

Long term: -70°C; Short term: +4°C

Precautions

GPR3 Antibody (Extracellular Domain) is for research use only and not for use in diagnostic or therapeutic procedures.

GPR3 Antibody (Extracellular Domain) - Protein Information**Name** GPR3**Synonyms** ACCA**Function**

Constitutively active G-protein coupled receptor that maintains high 3'-5'-cyclic adenosine monophosphate (cAMP) levels that plays a role in several processes including meiotic arrest in oocytes or neuronal development via activation of numerous intracellular signaling pathways. Acts as an essential activator of thermogenic adipocytes and drives thermogenesis via its intrinsic G(s)-coupling activity without the requirement of a ligand (PubMed:34048700). Has a potential role in modulating a number of brain functions, including behavioral responses to stress (By similarity), amyloid-beta peptide generation in neurons (By similarity). Stimulates neurite outgrowth in cerebellar granular neurons modulated via PKA, ERK, and most strongly

PI3K-mediated signaling pathways (By similarity).

Cellular Location

Cell membrane; Multi-pass membrane protein.

Tissue Location

Expressed predominantly in the central nervous system, and at low levels in the lung, kidney, testis, ovary and eye Highly expressed in regions of the brain implicated in the Alzheimer disease

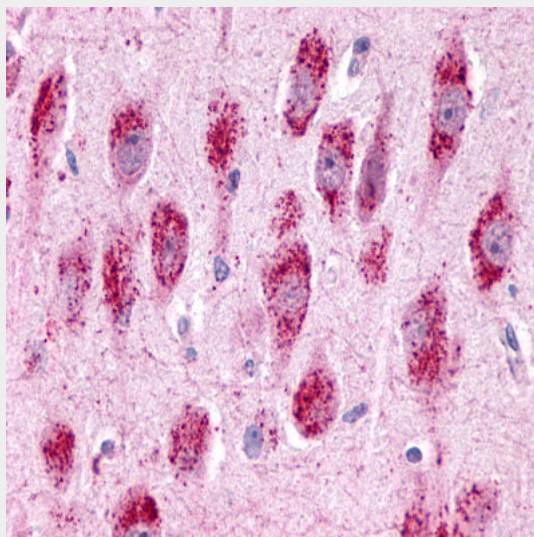
Volume

50 μ l

GPR3 Antibody (Extracellular Domain) - Protocols

Provided below are standard protocols that you may find useful for product applications.

- [Western Blot](#)
- [Blocking Peptides](#)
- [Dot Blot](#)
- [Immunohistochemistry](#)
- [Immunofluorescence](#)
- [Immunoprecipitation](#)
- [Flow Cytometry](#)
- [Cell Culture](#)

GPR3 Antibody (Extracellular Domain) - Images

Anti-GPR3 antibody ALS10037 IHC of human brain, neurons and glia.

GPR3 Antibody (Extracellular Domain) - Background

Orphan receptor with constitutive G(s) signaling activity that activate cyclic AMP. Has a potential role in modulating a number of brain functions, including behavioral responses to stress (By similarity), amyloid-beta peptide generation in neurons and neurite outgrowth (By similarity). Maintains also meiotic arrest in oocytes (By similarity).

GPR3 Antibody (Extracellular Domain) - References

Song Z.-H.,et al.Genomics 28:347-349(1995).
Iismaa T.P.,et al.Genomics 24:391-394(1994).
Eggerickx D.,et al.Biochem. J. 309:837-843(1995).
Ota T.,et al.Nat. Genet. 36:40-45(2004).
Gregory S.G.,et al.Nature 441:315-321(2006).